

Retail
Development
Industrial
Investment
Office



31 Victoria Street, Douglas
Isle of Man, IM2 1SE

Phone: 01624 625100

Email: commercial@chrystals.co.im

TO LET WAREHOUSE

Unit C, Laxey Glen Mills, Mill Road, Laxey,
Isle of Man, IM4 7AU
Annual rental of £25,800 Excl.



- 4300 sq ft warehouse
- Situated within Laxey Glen Mills
- Potential for a variety of uses, subject to planning consents
- Large warehouse space with roller shutter door and pedestrian door

Description

A unique opportunity to lease a spacious warehouse located within the renowned Laxey Glen Mills, offering proximity to local amenities and an excellent setting for various business needs.

This warehouse boasts an impressive 4,300 square feet of space, featuring a large open-plan layout that can accommodate a range of uses. The property is equipped with a roller shutter door for convenient access, alongside a pedestrian door for ease of entry. Inside, tenants will find ample sockets and 3 phase electric connectivity, catering to diverse operational requirements. Shared WC facilities are

www.chrystals.co.im

available on-site, ensuring convenience for staff and visitors.

This versatile and well-situated warehouse represents a rare opportunity in a sought-after location. Arrange a viewing today to explore the potential of this exceptional space.

Location

From the Co-Op on the New Road, Laxey, proceed down the hill. Continue below the MER bridge and proceed down Church Hill to the junction. Take the first right onto Mill Road. Follow along past Bridge House and Laxey Glen Mill is situated at the end of the road.

Services

Mains water, electricity and drainage are connected.

Possession

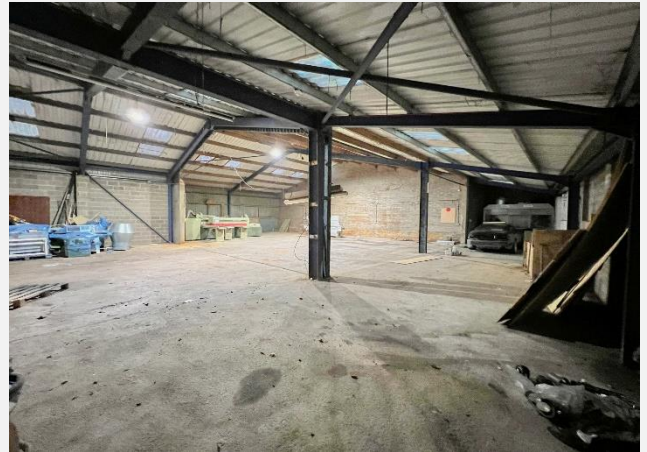
On completion of legal formalities.

Legal Fees

Each party to pay their own legal fees.

Viewing

Further details and viewing arrangements strictly by appointment through the Agents, Chrystals Estate Agents.



Notice is hereby given that these particulars, although believed to be correct do not form part of an offer or a contract. Neither the Vendor nor Chrystals, nor any person in their employment, makes or has the authority to make any representation or warranty in relation to the property. The Agents whilst endeavouring to ensure complete accuracy, cannot accept liability for any error or errors in the particulars stated, and a prospective purchaser should rely upon his or her own enquiries and inspection. All Statements contained in these particulars as to this property are made without responsibility on the part of Chrystals or the vendors or lessors. The company do not hold themselves responsible for any expense which may be incurred in visiting the same should it prove unsuitable or to have been let, sold or withdrawn. Unless otherwise stated all prices and rates are quoted exclusive of Value Added Tax (VAT). Any intending purchaser or lessee must satisfy themselves as to the incidents of VAT concerning any transaction.